

Looking at Locking



Autumn/Winter 2025

Welcome to Locking Parish Newsletter



VIEW FROM THE CHAIR . . .



Welcome to our Autumn edition of Looking at Locking. Thanks to our editorial team, Dawn, Kelly and all the others who have contributed to this publication.

Book Exchange & Community Living Room

Join us every Tuesday from 10am to 12pm at the Nurse Thomas Suite for our Book Exchange and Community Living Room. Enjoy refreshments, good company, and a chance to relax with a book.

Old Banwell Playing Field Car Park Update

Work on the drainage and surface improvements at the Old Banwell Playing Field car park was completed during the school holidays. The area now features new tarmac, white lines, and additional disabled bays. We hope to install electric gates soon to allow access outside of school term times, subject to funding.

Unauthorised Encampments on Locking Parklands

In the past two months, there have been two illegal encampments on Locking Parklands, on land owned by Homes England and managed by its development partners. In both cases, bailiffs acted swiftly to resolve the situation.

During the second incident, knee rails were damaged to gain vehicle access to a pedestrian-only area. Although police attended, no action was taken to remove the travellers. A significant amount of rubbish was left behind, which was cleared with the help of contractors and local residents from Locking Grove.

The Parish Council is working with partners to better protect our open spaces and prevent future incursions.

Looking Ahead

Locking Parish is entering a period of change. We encourage all residents to read North Somerset's Community Governance Review and the Site Allocations for Housing documents, both featured later in this edition of Looking at Locking.

Thank You & Farewell

We extend our heartfelt thanks to Paul Huish for his dedicated service as a Parish Councillor and representative of Locking Parklands. Paul's contributions have been greatly valued.

We also say goodbye to Tom Sizer, whose brief time on the Council was appreciated. Best wishes to both Paul and Tom as they move on to new opportunities.

Welcome to Councillor Kimberley Shepherd

We're pleased to welcome Kimberley Shepherd to Locking Parish Council. Kimberley brings a wealth of experience and knowledge, and we look forward to working with her.

Get Involved

There are currently 11 Councillors serving on the Parish Council, with 4 vacancies. If you're passionate about making a difference in our community, we'd love to hear from you. Email: admin@lockingparishcouncil.gov.uk

Councillor Paul Jones
Chairman

Welcome Councillor Shepherd

Hello my name is Kimberley Shepherd, I have lived in Weston all of my life and in Locking Village for 2 years.

I wanted to become a Councillor because I wanted to be involved in something that makes a difference. I hope to use my experience from teaching and working in the council to hopefully try and support the parish.



Are you looking for a new challenge? If your passionate about where you live and want to make a difference join the Parish Council.

The Parish Council aims are to support and improve the quality of life for the whole Parish of Locking.

For more information email admin@lockingparishcouncil.gov.uk

LOCKING PARISH COUNCIL MEETING DATES FOR 2025

Unless otherwise stated the Full Council meet the 1st Thursday of the month and Committees meet on the 3rd Thursday of the month, most meetings start at 7.30pm. Meetings are normally held at Locking Parish Hall but occasionally they have been held at The Radio Wing and Oaktree Park Community Hall – location details will be on the meeting Agenda.

Members of the public are very welcome to attend. Please check our notice boards and website www.lockingparishcouncil.gov.uk under Agenda & Minutes for further details.

Full Council & Committee Meeting dates 2025/26

Date	Month	Year	Meeting
16th	Oct	2025	Assets & Amenities Committee
6th	Nov	2025	Council
20th	Nov	2025	Finance & Human Resources
4th	Dec	2025	Council
18th	Dec	2025	Assets & Amenities Committee 7pm
18th	Dec	2025	Finance & Human Resources 8pm
8th	Jan	2026	Council
15th	Jan	2026	Assets & Amenities Committee
5th	Feb	2026	Council
19th	Feb	2026	Assets & Amenities Committee
5th	March	2026	Council
19th	March	2026	Assets & Amenities Committee 7pm
20th	March	2026	Finance & Human Resources 8pm
2nd	April	2026	Council
16th	April	2026	Assets & Amenities Committee
23rd	April	2026	Annual Parish Assembly

COMMUNITY GOVERNANCE REVIEW CONSULTATION

A Community Governance Review is an opportunity for North Somerset Council to review and make changes to the governance in our area. They use it to make sure that governance arrangements are working as efficiently and effectively as possible.

North Somerset Council are undertaking a full review of all parish and town councils within our area, in line with the government's recommendation to carry out a review every 10-15 years.

Local government are required to consult with local government electors living in the North Somerset District, any other individuals and organisations who 'appear to have an interest in the review'

A Community Governance Review can make several changes when there is clear evidence to do so. This can include:

- creating, merging, altering or abolishing parishes
- changes to electoral arrangements for parishes including:
the number of parish councillors and changes to parish wards

Draft recommendations have been formally published and the second stage public consultation is now live. You can view the draft recommendations and all other supporting documents on North Somerset Council's website at www.n-somerset.gov.uk/cgr and submit your response online at n-somerset.inconsult.uk/CGRPart2/consultationHome

A few key points to note:

- The draft recommendations have been shaped by the feedback and proposals received during the first stage of consultation. This second stage is particularly important, as it seeks your views on whether the draft recommendations reflect what is right for your community.
- NSC strongly encourage as many responses as possible. Every submission will be carefully considered by the Planning & Regulatory committee before the final recommendations are made.
- The deadline for all responses is midnight on **Friday 31 October 2025**

Site Allocations Under the Proposed 2040 Local Plan

North Somerset Council has identified several development sites across the district to meet government housing targets, including four key locations within Locking Parish – please see plan:

- **Land South of Old Banwell Road**
- **Land South of A371 and Beechwood Avenue/Beechwood Drive**
- **Land at Elm Grove Nursery, Elm Grove**
- **Land at Locking Parklands**

At the Parish Council meeting held on **3 July 2025**, members discussed the implications of these proposed allocations. Residents also voiced concerns during Public Participation, which were considered in depth.

Key points raised include:

- **Ecological Impact:** The Parish Council has requested clarity from the Planning Policy team regarding the updated **BAT Supplementary Planning Document (SPD)** and its potential effects on the proposed sites.
- **Open Space Shortfall:** A resident highlighted a lack of open space in areas such as **Handley Place, Locking Parklands**, which may conflict with North Somerset's planning policies.
- **Skatepark Proximity:** The approved skatepark at **Old Banwell Road playing field** (Planning Ref: 24/P/2334/FUL) was strategically placed away from homes. However, the proposed development south of Old Banwell Road (Ref: 25/P/1282/EA1) may bring new dwellings closer to the skatepark, raising concerns about noise and residential impact.

The Parish Council emphasized that while housing needs must be met, this should not come at the expense of **local ecology** or **community green spaces**. They are committed to submitting these concerns to the Planning Inspectorate during the Regulation 19 consultation phase.

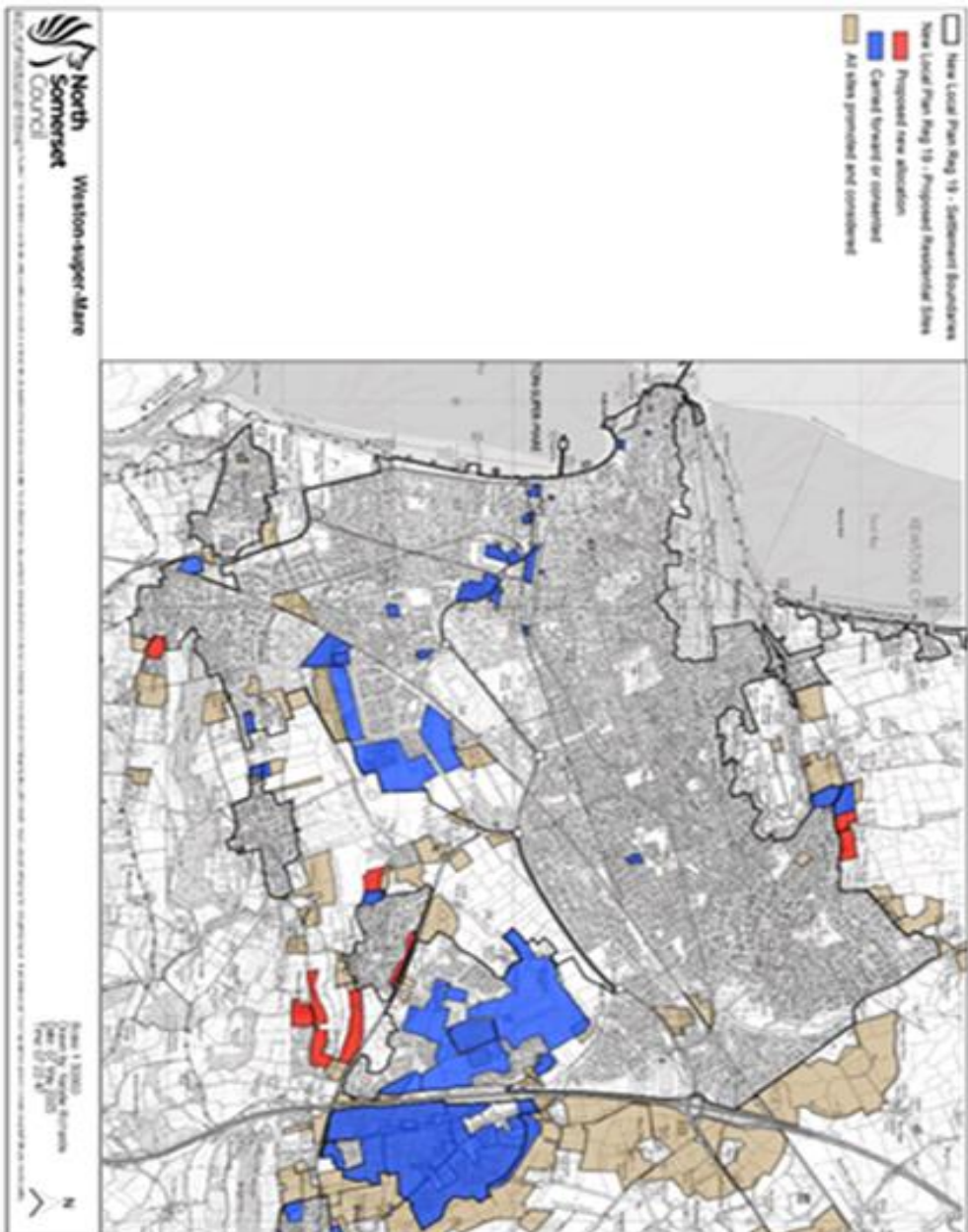
Stay Informed & Get Involved

Locking Parish Council will host **Public Meetings** as more information becomes available. These sessions will provide updates from North Somerset Council and offer residents a platform to share their views.

Together, let's ensure development in Locking Parish is **sustainable, respectful of nature, and beneficial to our community**.

Overall map around Locking/WsM

Areas shown in red are the potential site allocations



The poster features a light beige background with a subtle grid pattern. It is decorated with several autumn-themed elements: a large red maple leaf in the top left, a yellow flower in the top center, a cluster of red and orange leaves in the top right, a yellow maple leaf in the middle right, a red and orange leaf in the middle left, a red and orange leaf in the bottom left, a large red maple leaf in the bottom center, and a yellow flower in the bottom right.

Maker's Market

Sat 1 Nov

10am - 2pm

**At Locking Parish Hall,
Grenville Avenue, Locking, BS24 8AR**

FREE ENTRY

**To book a stall or for more information email
admin@lockingparishcouncil.gov.uk**

COMMUNITY DEFIBRILLATOR AND BLEED KIT



The defibrillator (also known as an Automated External Defibrillator or AED) **and Bleed Kit to stop blood loss are located in secure boxes by the entrance to Locking Parish Hall, BS24 8AR. What3Words: retrieves. Packets. host.**

The AED and Bleed Kit is available for use 24/7 to anyone in the vicinity who requires it, meaning that more people benefit from the presence of this device and lives could be saved.

When you dial 999 the Ambulance Call Handler will ask a series of questions and should your patient require it, they will identify the nearest available defibrillator or bleed kit to you, and give you access details.

If you're interested in becoming our next Defibrillator Guardian, please contact admin@lockingparishcouncil.gov.uk

LOCKING IN BLOOM

All 30+ flower tubs across the parish looked beautiful this summer. Thank you to Mike, Parish Orderly for all his hard work in painting the tubs and planting petunias, marigolds and many more.

The Coronation Garden also looked great. Thank you to local resident, Julie, for volunteering her time to make this area look so lovely.



Planters



Coronation Garden

HALL HIRE

The main hall and Nurse Thomas Suite availability and enquiries can now be made via our website: www.lockingparishcouncil.gov.uk. You can also find booking forms, terms and conditions and FAQs. You are very welcome to view the venue, please email admin@lockingparishcouncil.gov.uk to make an appointment.

Parish Hall



Nurse Thomas Suite



Facilities Include:	Suitable for the following occasions:
<ul style="list-style-type: none">★ Performance stage★ Spot lights & disco ball★ Sound system (<i>blue tooth enabled</i>) and microphone★ Induction loop★ Kitchen (fully equipped)★ Disabled toilet and baby changing facilities★ Wheelchair Access★ WIFI★ Parking★ Access to adjacent play park	<ul style="list-style-type: none">❖ Christenings/Blessings❖ Children's parties (<i>with or without a bouncy castle</i>)❖ Weddings/Anniversaries/Wakes❖ Pantomimes and Christmas parties❖ Musical Concerts, band or choir practice❖ School Events❖ Societies/Clubs❖ Training/Corporate events❖ Fitness Groups/Yoga/Karate❖ Dance Classes❖ Baby/Toddler groups



Locking Parish Hall – Scale of Hire Charges 1 April 2024 – 31 March 2025

Meetings/Charitable Organisations	Parish	Non-Parish	Apply Code at checkout
Adult Rate		£18.37	Apply code: M/CONon-Parish
Youth U14 Rate		£6.82	Apply code: M/CU14Non-Parish
Adult Rate	£10.12		Apply code: M/CO-Parish
Youth U14 Rate	£4.73		Apply code: M/CO(U14)Parish

Parties/Dances etc.	Parish	Non-Parish	Apply Code at checkout
Adult Rate		£21.90	Apply code: P/D(Adult)Non-Parish
Youth U14 Rate		£14.74	Apply code: P/DU14Non-Parish
Adult Rate	£12.43		Apply code: P/DParish
Youth U14 Rate	£10.12		Apply code: P/DU14

Commercial Organisations	Parish	Non-Parish	Apply code at checkout
Adult Rate		£21.90	Apply code: COnonLP
Adult Rate	£12.43		Apply code: COLP

Nurse Thomas Suite Meeting Room, kitchen, toilet	£8.50 per hour
---	----------------

All prices quoted are **per hour** – setting up and clearing away **MUST** be taken into consideration when working out the time you wish to hire the hall from and until.

Please contact the Clerk should you wish to book the Main Hall and Nurse Thomas Suite together for your event.

Crockery Hire: Please contact the Clerk for details.

Locking Memorial Christmas Trees

A Heartfelt Tribute This Christmas

As the festive season approaches, Locking Parish Council is offering a special way to remember loved ones with our Memorial Christmas Trees, located in Locking Village Park and Locking Parklands from 1st December. We understand that Christmas can be a challenging time for those who are grieving. That's why we're inviting everyone in the community to take part in this touching tribute. Whether it's a message of remembrance, a note of thanks, or simply words of love, you're welcome to add your thoughts to the tree.

🌲 How to Take Part

- It's free to add a message to the tree.
- Please ensure your notes are securely tied and weatherproof to protect them from the elements.
- You're also welcome to add baubles or decorations, but please avoid items that could pose a safety risk.

🎄 Decorate with Heart

We'll have wooden Christmas decorations available for £1 each at the Parish Council office and at the Makers Market on 1 November. You can decorate these with your personal message. All proceeds will support the Locking Skateboard Project—a great cause for our local youth!

⚠️ Please Note – For Safety Reasons, Do Not Use:

- Lights
- Candles
- Tinsel
- Breakable items (including baubles)
- Glass
- Alcoholic drinks

Any such items will be removed to ensure the safety of all visitors.

📅 Important Dates

The Memorial Trees will remain in place until Monday, 5 January 2025. If you'd like to keep your decorations or messages, please collect them before this date.

Let's come together this Christmas to honour those we miss and celebrate the love that continues to shine in our hearts.

Old Banwell Road car park

We are delighted to share an update on the recent improvements made to the Old Banwell Road car park. As part of our ongoing efforts to enhance the facilities for the community, we are pleased to announce that the much-needed car park lining project has now been completed.



Yellow cross-hatched markings



Old Banwell Road car park

Thanks to the excellent work of N Bartlett Ltd for resurfacing and WSM Traffic Management for line marking. The parking spaces are now clearly marked, making the area more organised and user-friendly. We believe this new layout will help to reduce congestion, improve safety, and provide a more accessible space for everyone who uses the car park.



Old Banwell Road car park



Disabled parking bay

Looking ahead, the next step in improving the car park will be the installation of electric gates. These gates will ensure that the car park remains secure while also allowing access throughout the day, making it even easier for residents and visitors to use the space as needed. We will keep you updated as the next phase of the project progresses.

Locking Parish Council Small Grant Scheme



Locking Parish Council's annual budget includes a sum of money for grant awards. The **Grant Awards Policy** has been drawn up to demonstrate a fair and transparent process and sets out the procedure the Council will follow when making its decision.

A grant is any payment made by the Council to an organisation for a specific purpose that will benefit the Parish, or residents of the Parish; and which is not directly controlled or administered by the Council. The Council awards grants, at its discretion, to organisations which can demonstrate a clear need for financial support to achieve an objective which will benefit the Parish by:

- Improving recreation and/or sports
- Enhancing the quality of life
- Promoting the Locking Parish in a positive way
- Providing a service
- Improving the environment

Locking Parish Council will not normally make grants to organisations outside of the Parish unless there are direct benefits to the Parish, or its residents. Applications should be made for 'one-off grants' that will not result in any recurring expenditure for the Parish Council.

For further details and a grant application form email admin@lockingparishcouncil.gov.uk

FLOWERDOWN PARK RECEIVES SMALL GRANT FOR COMMUNITY BENCH



After reading the latest edition of Looking @ Locking our Parish magazine, something special caught my eye—a notice about small grants available for community groups within the Parish. Intrigued, I headed over to the Parish Hall to speak with the Parish Clerk, Dawn, and learn more about the opportunity.

With helpful guidance and all the necessary information in hand, I returned the following week to submit our application. Our goal was simple but meaningful: to install a bench at Anson Road Park on Flowerdown Park where residents could rest, enjoy the scenery, and take a moment during their walks—whether with dogs or without.

The application was added to the agenda for the next Parish Council meeting. After discussion, the Councillors kindly approved the grant.

Thanks to their support, Anson Road Park now boasts a beautiful new bench for everyone to enjoy.



From providing wooden flowerpots, plants and watering them, when necessary, to installing the Queen's Platinum Jubilee bench and ensuring that the notice board at the end of Oxford Square is regularly updated. The Directors of LMRC Ltd, representing the Flowerdown Park residents, would like to extend their thanks to Locking Parish Councillors for their continued support.



Locking Skatepark Project – Help Us Build a Space for Youth!

Hi, I'm Ben, founder of the Locking Skatepark Project, and I'm passionate about creating a space where young people in Locking can come together, be active, and have fun.

Locking currently has **no facilities for older kids or young adults**, and nothing nearby supports **wheeled sports** like skateboarding, BMX, or scootering. We're on a mission to change that.

Our Goal

We want to build a safe, welcoming skatepark at Old Banwell Road Playing Field in Locking. A place where young people can:

- Practice and play
- Learn new skills
- Make friends and feel part of something positive

Why Your Support Matters

Your donation will help us:

- Build the skatepark
- Create a safe, inclusive space for young people to hang out and stay active
- Support physical and mental well-being through outdoor fun
- Offer a creative outlet for learning and growth
- Cut down on the need to travel to other towns

Our Story

Back in February 2022, when I was just 14, I started a petition for a skatepark in Locking. The response was amazing—so many people supported the idea!

- The idea gained strong local support and was presented to **Locking Parish Council**.
- Working in partnership with **Locking Parish Council and Locking Skatepark Project Group** a **Skatepark Working Group** was formed.
- **Locking Parish Council** committed to allocating the land at Old Banwell Road Playing Field Locking.
- **Maverick Industries** designed the park, and with the support of **Locking Parish Council** planning approval was secured.

Project Status

We've laid the groundwork. Now, we need **£300,000** to bring the skatepark to life.

Why It Matters

The Locking Skatepark Project is a community-led initiative aiming to build a professionally designed, high-quality concrete skatepark in Locking, North Somerset. This purpose-built facility will cater to skateboarding, BMX, rollerblading, and scooters, offering a safe, inclusive, and accessible environment for young people of all genders and abilities, including adaptive riders or those with partial or restricted vision. This isn't just about ramps and rails—it's about giving young people a place to belong.

Located on Locking Parish Council-owned land at Old Banwell Road Playing Field, Locking, the skatepark will enhance existing community spaces and provide a much-needed recreational hub. Currently, local youth must travel to other towns to access modern skateparks, making this project a vital investment in local infrastructure

This skatepark will serve Locking, as it continues to grow with the large housing developments being built but few youth-focused amenities. It will:

- Provide a safe, active space
- Promote physical and mental well-being
- Reduce anti-social behaviour
- Be free to use, 24/7, all year round

Timeline

We hope to complete fundraising and begin construction by **August 2026**.

How You Can Help

Every donation—big or small—brings us closer to giving Locking's youth a space they can truly call their own. Contact admin@lockingparishcouncil.gov.uk for donation details and watch out for our Crowd Funding page to be launched soon!



Your Mobile Library



Visits **Wick St. Lawrence, Kewstoke/Sand Bay, Locking, Hutton, Bleadon and Uphill** fortnightly on **Fridays**:

2025	Friday
August	15, 29
September	12, 26
October	10, 24

H – public holiday = vehicle off road

M – maintenance = vehicle off road

Stops at:		
Wick St. Lawrence	Church	9:35 – 9:55am
Kewstoke/Sand Bay	Village Hall	10:25 – 10:45pm
Locking	Meadow Drive	11:15am – 12pm
Hutton	Holm Road	1:15 – 1:45pm
Bleadon	Parish Council Car park	2:05 – 2:50pm
Uphill	Uphill Way Car Park	3-4pm

Please note that stops and timings may be subject to change during the currency of this timetable.

The Mobile Library is currently offering a 'Click & Collect' only service, which will allow customers to collect pre-ordered books, at the agreed time, from their stop.

Customers can continue to reserve specific items in the usual way via www.librarieswest.org.uk or the LibrariesWest App and will be contacted when these items are available for collection.

For more information, or if you are unable to place a 'Click & Collect' order via the above methods, please call 01275 888 864 or email mobile.library@n-somerset.gov.uk.

For more information about mobile library services please visit www.n-somerset.gov.uk/libraries.



@nslibraries



@NSomLibraries

ANTI-SOCIAL BEHAVIOUR

The Spinney: The ripping out of drainage grates and then an unauthorised repair by an unknown person(s) has now been infilled with tarmac by North Somerset Council. There is also the addition of the kerb edging where the drains were originally placed which improves the overall finish.



before



after



after

Fly Tipping incidents continue to be a problem in our community. Fly tipped waste includes household waste, building rubble, domestic white goods, and clothes – Below is a photograph of waste dumped at Old Banwell Road last week:



*Fly tipped items at
Old Banwell Road*

If you witness fly-tipping, please report it to North Somerset Council with the following information:

- Date, time and location
- Details of items deposited and quantity
- Details of the person(s) depositing the waste
- Details of the vehicle used by the person(s) to deposit the waste including make, model, colour, registration

If your waste is found fly tipped and you cannot provide documentation showing who collected it, you could end up with a fine

Criminal damage: During the summer, individuals deliberately removed roof tiles and caused damage to the drain pipes on the changing room building at the Old Banwell Road playing field. These facilities are provided for the benefit of our community, and it is disheartening to see them being treated with such disregard. This act of vandalism is not only irresponsible and dangerous, but it also comes at a direct cost to the local community. Repairs for this kind of damage are funded through parish finances.

We are currently working to assess the full extent of the damage and arrange the necessary repairs. We would ask everyone to remain vigilant and help us protect our shared spaces by reporting any further incidents to the Police.



Missing roof tile



Damaged drain pipes



Damaged drain pipes

Graffiti has been appearing on various bollards and lamp posts around the parish. Actions like this harm the community and take valuable resources away from other important projects.

The Parish Council is working to address the situation and remove the graffiti as quickly as possible. Thank you for your continued support in helping to keep Locking a clean, safe, and welcoming place for all.



Graffiti

LOCKING COMMUNITY LIVING ROOM AND BOOK EXCHANGE

TUESDAYS 10AM TO 12 NOON

NURSE THOMAS SUITE, LOCKING PARISH HALL



A RELAXED SPACE TO GET
TOGETHER, CHAT, ENJOY
FREE HOT DRINKS,
CAKE & BISCUITS AND USE
THE BOOK EXCHANGE

EVERYONE IS WELCOME



REPRESENTATIVES FROM NEIGHBOURHOOD POLICING, ALLIANCE HOMES AND WERN
OFTEN ATTEND ON TUESDAYS, KEEP AN EYE ON OUR FACEBOOK PAGE FOR UPDATES

PARKLANDS SINGERS

Do you enjoy singing? If so, do come along to see us at Parklands Singers.

We are a group of adults who enjoy singing together, having fun and making new friends. You do not need to be able to read music and we welcome all singing abilities. We also enjoy leading 'singalong sessions' for groups of people who want to join in and sing with us. Here are some of us at Locking Seniors in August, what fun we all had!



We meet on the first Wednesday of every month at Locking Parish Hall, Grenville Avenue, BS24 8AR from 7.30 – 9.15pm. There is a small charge (£5) to cover costs, including light refreshments. Your first visit will be free, to give you a chance to come and see what we do with no obligation. We laugh a lot, talk together and make new friends. Do come along, we'd love to see you.

Our next few sessions are

Wednesdays - 5 November, 3 December and 7 January

For more information, contact Christine Hall on

01934 827686 or chris.rushall@gmail.com

PARKLANDS EDUCATE TOGETHER PRIMARY SCHOOL

It was a busy and exciting summer term at Parklands Educate Together Primary Academy, with plenty going on across the school and wider community. We were thrilled to see such a strong turnout at our Summer Fair, organised by our dedicated Parent Staff Association (PSA). The event was wonderfully supported by families, friends and the local community. The AGM this year is on Thursday 25 September for anyone who has some spare time to support the school in this way.

Sports Day was another huge highlight, with over 800 visitors joining us on site to cheer on the children. Pupils took part in a variety of activities with energy and enthusiasm, and we were proud to crown Halton House the winning team. All our school houses are named after RAF bases as a nod to our school's history, being part of RAF Locking.



Our children also took part in a creative competition to design a unique version of 'Norbot', our entry into the Wallace and Gromit Gromit Unleashed 3 Appeal. Our completed sculpture is on display at The Mall at Cribbs Causeway this September as part of the public art trail.



We were also extremely proud to be awarded the Eco-Schools Green Flag Award. Our pupils have worked hard on a number of environmental projects including planting, recycling, and even a local beach clean-up.



Our school continues to grow. We welcomed over 50 new children across various year groups last year and our new Reception intake is also full.

Autumn is now with us and the PSA are organising a Halloween Disco for the children on Thurs 25 Oct. The PSA Christmas Fair will be on 10 Dec, 3-4:30pm. Please put the date in your diary. We would love any local stall holders to join us for a small donation. Contact us at parklandsetpsa@gmail.com for further information.

WINTERSTOKE HUNDRED ACADEMY



For more information visit <https://clf.uk/volunteer-with-us/> or scan the QR code



LOCKING PRIMARY SCHOOL

It has been a fantastic start to the new academic year as we have welcomed many new and returning children to our Locking family!

We had another busy summer with the refurbishment of our Year 6 classroom including new toilets and we are all (especially our children) delighted with the outcome. The start of the new academic year has also seen the launch of our new OPAL play project. This project is focussing on transforming our lunchtime provision and we encourage you to keep a close eye on our FACEBOOK page as this takes shape!

Our school catering has also had a shake up as it has come 'in house' across all our ELAN schools. The menu choices, portion sizes and buzz in the dinner hall (particularly over the pudding) has been a real joy to see!

We have a number of events coming up in the next few months that we would love see the wider community supporting so please do get in touch.



We are looking for a community governor to join our local Locking governing body! Please get in touch with Mrs Simpson (Headteacher) if you are interested in joining our school family – the support of our community is vital and we need you! Contact office@locking.extendlearning.org to arrange a visit!



Weekly timetable

Boogie Beat Yatton, Weston, Taunton and Somerset



MONDAY

Meadvale
Mixed age Class
9:30-10:15
10:30-11:15

Baby Class
11:30-12:15

TUESDAY

Cheddar
Mixed age Class
10:15-11:00

Cheddar
Baby Class
11:15-12:00

WEDNESDAY

Locking
Mixed age class
9:30-10:15
10:40-11:25

THURSDAY

East Brent
Mixed age Class
9:30-10:15

East Brent
Baby Class
10:45-11:30

FRIDAY

Congresbury
Mixed age Class
9:00-9:45

Uphill
Mixed age
11:00-11:45

WEEKENDS:

Available for birthday parties



Contact:

Naomi on- 07899677770

email-

naomi.hansford@boogiebeat.co.uk

CRAFT CLUB

We are a friendly group who enjoy a natter while crafting.
We meet on Monday mornings during term-time from
10.00am – 12 noon in St Augustine's Church Centre.

We do various crafts including card making, pergamano, knitting, embroidery, and also have regular craft demonstrations which could introduce you to new crafts.



We welcome new members. Please bring your own craft to start with. The cost is £2 per session to include tea/coffee and biscuits.

For more information please call Eileen Begent on 01934 822050 or email eileen@begent.org

LOCKING SENIOR CLUB

How quickly this year is flying by!

In July, we held an afternoon tea, which was great fun. Food from Parkside Café, was excellent, many thanks to Dan.

On August 6th, Parkland singers came to entertain us and we all went home with smiles on our face's after joining in with all the wonderful songs. What a joyful group they are!

September 3rd, Weston Ukulele Band came to visit us. Another group of fantastic people, who entertain and raise funds for the Children's Hospice at Wrexham. We will definitely be having them back for next year. I didn't know there were so many different types of Ukulele's!

Dates of forthcoming meetings: 15th, 29th. November 12th, 26th - Parkland singers return visit.

Just 1 meeting on December 3rd

2026 - January 7th, 21st

We meet fortnightly, in St. Augustine's Church Centre. If you would like more information, please contact Anthea Raines on 01934 820255





info@carleatheatrearts.co.uk

Carlea Theatre Arts provides a wide range of classes that welcome all abilities, from walking through to adults.

All pupils from little stars upwards can perform in our regular shows we produce at the Playhouse Theatre. Pupils also have the opportunity to take graded examinations with the ISTD as well as medal exams with the UKA. All teachers are highly qualified, DBS checked, first aid and safeguarding trained. Our current timetable at Locking Parish Hall is as follows:

Monday: 10.00-10.45am Little starlets,
from walking-preschool.

Tuesday: from 6 years upwards
4.30-5.00pm Body conditioning/flexibility
5.00-5.45pm Acro

Wednesday: 6-11 year olds
4.30-5.15pm Contemporary dance
11 years upwards 5.15-6.00pm and
6.00-6.45pm contemporary dance.

Saturday: 2.5 years and upwards.
9.15-9.45am Little stars ballet
9.50-10.20am Little stars Tap
10.25-10.55am Little stars Ballet
11.00-11.45am Pre Primary ballet
11.50-12.20pm Pre Primary Tap
12.30-1.15pm Primary Tap
1.15-2.00pm Primary Ballet
2.00-2.30pm Primary Modern

Full timetable of classes is on our website:
www.carleatheatrearts.co.uk



At The Radio Wing (Locking Parklands Hall):

Thursdays: 5.00-5.45pm Grade 3 Ballet
5.45-6.30pm Grade 4 Modern
6.30-7.15pm Grade 3 Tap
7.20-8.05pm Adult Tap
8.05-8.50pm Adult Jazz

Fridays: From 6 years and upwards:
4.30-5.15pm Junior Street Dance
5.15-6.00pm Intermediate street dance
6.00-6.45pm Senior street dance
6.45-7.30pm Senior Contemporary Dance

Saturdays: 9.30-10.15am Grade 1 Ballet
10.15-11.00am Grade 1 Tap
11.00-11.45am Grade 2 Modern
11.50-12.35pm Grade 2 Ballet
12.35-1.20pm Grade 2 Tap
1.20-2.05pm Grade 3 Modern



News from your Parish Church

At 10am on Sunday 5th October we will be having our Harvest Service in Church. We will be collecting non-perishable food for Somewhere to Go. We'd be delighted if you'll join us!
Every blessing from, Rev Larissa Trust, Vicar of Locking

ST AUGUSTINE'S LOCKING CHURCH OFFICE

Contact the church office if you would like help, would like a visit or need some prayers or if you would like to receive our monthly 'Stay Connected' newsletter.

The Church Office is by the Church Centre opposite the church
(Open Mondays and Thursdays 10.00am - 2.00pm)

Tel: 01934 822857 or Email: huttonandlocking@gmail.com

St Augustine's Locking church website:
www.staugustineslocking.org for news, services and activities

Church Services October to December 2025

Sundays	St Augustine's Church, Locking
12 October 2025	10am Holy Communion
19 October 2025	10am Joint Morning Service (in St Mary's Hutton)
26 October 2025	10am Church in Centre 4pm Joint Memorial Service (in St Mary's Hutton) Remembering those we have loved and lost.
2 November 2025	10am Holy Communion
9 November 2025	10am Remembrance Service
16 November 2025	10am Joint Morning Service (in St Mary's Hutton)
23 November 2025	10am Church in the Centre
30 November 2025	10am Morning Service
7 December 2025	10am Morning Service
14 December 2025	10am Holy Communion
21 December 2025	10am Church in the Centre Nativity 6pm Carol Service
Wed 24 December 2025 Christmas Eve	3pm Christingle Service 11.30pm Midnight Mass (in St Mary's Hutton)
Thurs 25 December 2025 Christmas Day	10am Christmas Morning Family Communion

St Augustine's Church Locking

Remembrance



Sunday



9th November

**Remembrance Service
and Parade.**

**Everyone is welcome to join us in
church at 10am, for this Uniformed
Organisations Parade and
Remembrance Service which will
include an act of remembrance.**

**For more information
ring 01934 822857**





Somerset Festival of Remembrance

Commemorating the 80th anniversary of the end of World War II at Wells Cathedral, with a special focus on honouring the contribution of the people of Somerset. Featuring music performed by the Central Band of the Royal British Legion and Yeovilton Military Wives Choir.

Saturday 1 November 2025, 7.00 p.m.

Tickets available via
[Somerset-Festival-of-Remembrance-2025.eventbrite.co.uk](https://www.eventbrite.co.uk/Somerset-Festival-of-Remembrance-2025)



Christmas 2025 at St. Augustine's Locking



Saturday 22nd November

Christmas Community Cafe

10.00am – 12.30pm in the Church Centre

coffee, cakes, crafts, stalls and chat

Sunday 21st December

10.00am Christmas Celebration with Nativity in Church Centre

6.00pm Carols by Candlelight in the Church

Wednesday 24th December Christmas Eve

3.00pm Christingle Service in the Church

Bring an orange to the Church Centre from 2.15pm

to make your Christingle

11.30pm Midnight Holy Communion in St. Mary's Hutton

Thursday 25th December Christmas Day

10.00am Family Christmas Communion

Locking Handbell Ringers

Locking Handbell Ringers are looking for new members as we start to practice a few tunes to ring at the Christmas Carol Service.

It is great fun, all ages and no experience necessary!

Thursdays 7.30pm – 8.30pm starting 30th October in St Augustine's Church



Let me know if you can join us. Simon Begent 01934 822050

Little Ark Toddlers

Hi. We are a very friendly group of Parents, Grandparents and Carers who meet every Wednesday at 10.30am to 12.30pm during term time in Locking Church Centre. All children are welcome from birth to school age.

We have a large variety of toys including: a slide, Happy Land, Play Dough, Kitchen and much more, as well as an area for the very young children.

Each week we have a different craft activity. The cost is £2 per family, which includes tea, coffee, squash and biscuits.

So why not give us a try and join in the fun?

Please contact Gail 07818 677635 for more information!



COMMUNITY CAFÉ



Locking Church Centre,
10am – 12.30pm
Saturday 27th Sept
Saturday 25th Oct
Saturday 22nd Nov

Meet - Chat - Charity Stalls - Cakes - Teas
with Children's activities

For details tel.: 01934 822857 or email buttonandlocking@gmail.com
Contact us if you would like a stall for your chosen charity

You are warmly invited to come and meet others in the

COMMUNITY LOUNGE



in the Green Lounge, Church Centre,
Lychgate Park, Locking
Every Tuesday afternoon 2pm-4pm

Cuppa - Chat - Books - Puzzles - Games

Make new friends, have a friendly chat, be yourself and
relax. Ideal for carers to bring your loved ones too.



Classes at Locking Parish Hall

Day & Time		Class
Fri	9:45am - 10:30am	★ NEW CLASS ★ 6 Months - Walking Class (6 mths - 15 mths)
Fri	10:45am - 11:30am	★ NEW CLASS ★ Walking - 2 Years (15 mths - 2yrs 3mths)
Fri	11:45am - 12:30pm	✿ 2 - 3 Years ✿ (2yrs - 3yrs)
Fri	12:45pm - 1:30pm	🏠 3 Years - School Age 🏠 (3yrs - 4yrs 11mths)



**FUN PHYSICAL
PLAY PROGRAMME!**

CLASSES IN

- ★ LONG ASHTON
- ★ NAILSEA
- ★ NORTH WORLE
- ★ PORTISHEAD
- ★ WESTON
- SUPER MARE

.....
FROM 6 MONTHS
TO SCHOOL AGE!



07398 167 586 • northsomerset@tumbletots.com
www.tumbletots.com/northsomerset



Locking Parish Council

Children's play area



No dogs allowed

Polite reminder that there are no dogs allowed in Locking Village Park. There is a Public Space Protection Order on the park and it carries a £75 Fixed Penalty Fine.

Locking Allotments: • For dog owners walking through the Allotments, please keep your dog on a lead at all times and also please keep them out of the water troughs

REPORTING ANY INCIDENTS YOU WITNESS

North Somerset Council

www.n-somerset.gov.uk/connect or 01275 888 802

- Dog Fouling
- Missing or stray dogs
- A dog attacking another dog

RSPCA

www.rspca.org.uk or 0300 1234 999

- Cruelty to an animal

Avon and Somerset Police

www.avonandsomerset.police.uk or 101 – 999 if an emergency

- A dog attacking a person or assistance dog
- A dog dangerously out of control
- A dog on a main road or motorway



FOUR PAWS PHYSIO

New Veterinary Physiotherapy Services

Ran by a qualified Veterinary physiotherapist who is also a registered vet nurse

Services I offer:

- Home visits
- Cats, dogs and small animals
- Evening and weekend slots also available
- Pre-habilitation and Rehabilitation
- Golden Oldie package
- Working and sporting dogs
- Choice of loyalty scheme or PAYG options

Contact:

Email:

fourpawsphysiotherapy@gmail.com

Website:

<https://www.fourpawsphysio.co.uk/>



IAAT

Working for excellence in animal therapy

Follow us on social media

What is a Village Agent?

Village Agents work in the rural areas of North Somerset to offer free support services to maintain independent living to people over the age of 50.

We offer a friendly and confidential service aimed at providing information and advice on a wide variety of issues, for example:

- Help to remain in your own home by accessing social support where eligible.
- Information regarding domiciliary care support.
- Information on social groups and activities in local communities.
- Support if you are feeling socially isolated and lonely.
- Help with transport issues including transport to medical appointments.
- Information on financial concerns and money matters.
- Help completing forms such as Attendance Allowance or Blue Badge.
- Advice on unwanted callers and scams.
- Support with health and wellbeing.
- We can discuss these issues, either over the phone or face-to-face with a home visit and referral to relevant organisations as appropriate.
- All personal information is treated in confidence and maintained using secure measures as required by law.

Your local Village Agent in Locking Village is **Sue Badger**, and she can be contacted on: 07974 983042 or sue.badger@curo-group.co.uk





Avon and Somerset Police **NEIGHBOURHOOD POLICING**

Talk to us

Join your Neighbourhood Policing Team at

Drop in and speak to PCSO Steve Hemmett, whether you want advice on how to protect your belongings, arrange for free bike security marking, more information about the work we are doing in your area, or you want to raise a concern about an issue in your community.

Time: 10:00 to 12:00PM **Tuesdays**

Date: 28/10/25 25/11/25 23/12/25

Location: Locking Village Hall, Grenville Ave,
Locking, Weston-Super-Mare BS24 8AR.

For more information please visit:
www.avonandsomerset.police.uk/your-area

Follow us on    



Banwell Gardening Club is *TOP OF THE POTS*

On 8th March eager exhibitors arrived at Banwell Village Hall with magnificent displays for the Spring Show. This year there were more entrants particularly from children and only 2 categories were left empty. Next year's show is on SATURDAY 7th MARCH 2026 at Banwell Village Hall.

During the summer we had fantastic trips out to see some of the beautiful gardens in the south west. At Banwell Primary School fete each child was given a plant to nurture and hopefully enter into the Horticultural Show on 6th SEPTEMBER at Banwell Village Hall.

At our meetings, speakers encouraged us to have a pond or allow our gardens to self seed themselves. Future meetings are:

23rd OCTOBER - WAR GRAVES and THE ENVIRONMENT

27th NOVEMBER - SOCIAL NIGHT. 60s/70s music with a bar, a quiz and raffle

So come along and have a fun night at any of our meetings.
Details can be found at www.banwellgardeningclub.org.uk



Locking Village Hall, Grenville Avenue,
Weston-super-Mare, BS24 8AR

has a brand new clothing bank supporting
Dorset and Somerset Air Ambulance
Please donate all of your unwanted and unloved
clothing, shoes, handbags and belts here



**DORSET
& SOMERSET
AIR AMBULANCE**

www.dsairambulance.org.uk

Registered charity number: 1076002



**Recycling
Solutions**

The maintenance and collection costs of this clothing bank are paid for by the community and the local authority. We are a not-for-profit organisation and any surplus funds are reinvested in the bank.

First Royal Navy Sea King Mk.6

LANDS AT THE HELICOPTER MUSEUM



A piece of British naval history has touched down at Locking, a Westland Sea King HU Mk.6, donated by RAF Heritage and believed to be the first of its kind to join a museum collection anywhere in the world.

The iconic aircraft, serial ZA133, was delivered to the museum on 15 August. Its arrival marks the end of a long quest by Museum Founder and President Elfan ap Iwan to bring this legendary helicopter to the national collection.

Built at Yeovil in 1981, ZA133 served the Royal Navy for 25 years, clocking up over 8,000 flying hours. It saw action in the Falklands conflict of 1982, operating from HMS Hermes and RFA Fort Austin, and later supported NATO operations in Bosnia and the Gulf.

Originally designed for anti-submarine warfare, the aircraft was later converted for troop transport and search and rescue missions before being retired in 2006.

"This helicopter is an important part of our nation's story," said Elfan. "The Sea King is instantly recognisable and loved by so many – from its vital military role to the countless lives saved on search and rescue missions. We're delighted that visitors will now be able to see ZA133 up close."

The Sea King family became a British aviation icon serving with the Royal Navy, Royal Air Force and several overseas operators for decades. Its distinctive silhouette and versatility made it a mainstay in conflicts and humanitarian missions around the world.

ZA133 will now be prepared for public display as part of the museum's growing collection of historic helicopters.

Taking place at The Helicopter Museum this Winter...

Halloween Family Fun Day with Giant Bubble Shows – 26th October
Christmas Themed 'Ho Ho Ho'pen Cockpit Day – 14th December

The Helicopter Museum is a Registered Charity and home to the
Worlds Largest Collection of Helicopters.

ADVERTISE WITH US

Looking @ Locking is a quarterly, A5 publication that is hand delivered to all of the houses in the Locking Parish and is available online at www.lockingpc.co.uk

The Parish Council has decided to include advertisements in the newsletter to help offset the printing costs. Only adverts from Weston-super-Mare businesses/organisations will be accepted.

**A5 Full page
portrait**

£125

**Half page
landscape**
(9.7 cm high x
13.1cm wide)

£49

**Quarter page
portrait/landscape**
(9.7 x 6.3cm (portrait)
4.7 x 13.1cm
(landscape)

£28

For further information email: LPC.Admin@lockingparishcouncil.co.uk

REPORTING ISSUES AND PROBLEMS

Resident Parishioners are encouraged to report issues themselves to various organisations. The Clerk & Parish Council do try to deal with reported concerns within the resources available. Please use the chart below to find the right contact to report a concern.

WHAT IS THE ISSUE?	WHO DEALS WITH IT?	CONTACT DETAILS
Fly tipping; flooding; pot holes; street lighting (other than the 26 pc-owned lamps); missed recycling; dog fouling on pavements; overgrown hedges that obstruct footpaths & roads	NORTH SOMERSET COUNCIL	www.n-somerset.gov.uk 01934 888 888
Anti-Social behaviour, cold calling; suspected phone scam; parking issues; speeding	POLICE	101 <i>999 (IN AN EMERGENCY)</i>
Locking Parklands Residents can also contact Preim Ltd for any of the following: fly tipping; flooding; potholes; overgrown hedges that obstruct footpaths or roads	PREIM Ltd	Regional Customer Support Team helpdesk@Preim.co.uk 24/7 Helpline 01778 382210
Locking Village: 26 PC owned street lights, dog bins, litter bins, street furniture, Parish Hall, park, allotments, open spaces	LOCKING PARISH COUNCIL	admin@lockingparishcouncil.gov.uk 01934 820786

LOCKING PARISH COUNCIL



01934 820786

07942 670873



admin@lockingparishcouncil.gov.uk



www.lockingparishcouncil.gov.uk



Follow us on FACEBOOK -

<https://www.facebook.com/Lockingparishcouncil/>



Locking Parish Hall

Grenville Avenue

Locking

Weston-super-Mare

BS24 8AR



Your COUNCILLORS

CLlr Paul Jones	Chairman	0792 8680464
CLlr Elfan Ap Rees		01934 822524
CLlr Peter Lacey		01934 822660
CLlr Carl Prosser		07799 607748
CLlr Wendy Ashdown		07983 573766
CLlr Bill Bearsby		01934 823144
CLlr Mike Tremlett	Vice-Chairman	07435 969050
CLlr Ian Hilder		07724 996269
CLlr Paul Schofield		07517 500567
CLlr Tess Poynton		07748 612107
CLlr Kimberly Shepherd		07763 278936

Published by Locking Parish Council.

Any views expressed by contributors to 'Looking at Locking' are not necessarily the views of the Parish Council nor are they endorsed by the Council



PAWS & PLAY DOG DAYCARE



Daytime daycare
8am - 6pm
Monday - Friday

www.pawsandplaydogdaycare.co.uk

07452 875613

Info@pawsandplaydogdaycare.co.uk
Unit 25, Moor Park, Locking, BS24 8RA



The Groom Studio

© PAWS & PLAY

**SCAN HERE TO BOOK YOUR
GROOMING APPOINTMENT NOW**

